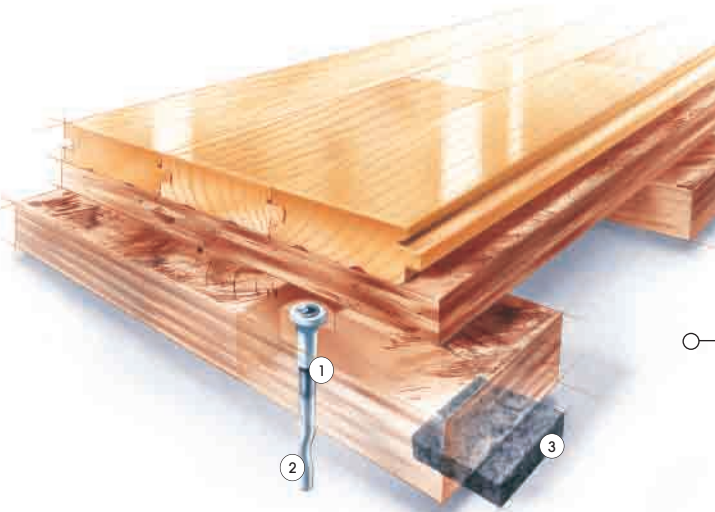


SYSTEM FEATURES AND BENEFITS

A sports floor system providing resiliency and substrate anchorage consisting in general of a vapor barrier, Rezill resilient pads, plywood sleepers, plywood subfloor, anti-Squeak collared steel anchors, maple flooring, sanding, sealers, finishes, game lines and wall base.



- ① Anti-Squeak Collar
- ② Installed with Connor "Sure Stop" Anchorage Tool
- ③ Rezill Pad

SPECIFICATIONS

MANUFACTURING

ISO9001:2000
CERTIFIED

SYSTEM TYPE

Fixed Resilient

ANCHORAGE

Singular Pinned
(Design Group 3)

SUBFLOOR CONSTRUCTION

Sleeper and Plywood

RESILIENCE

Rezill Pads

RECYCLED CONTRIBUTION



Anchored Rezill Sleeper DIN Subfloor System includes components with recycled content.

SLAB DEPRESSION

25/32" (20 mm) flooring - 2 5/8" (67 mm)
33/32" (26 mm) flooring - 2 7/8" (73 mm)

DIN STATUS



D-I-N

Meets or exceeds all the requirements of DIN 18032, part 2

TESTING LABORATORY



United States Sports Surfacing Laboratory

CERTIFIED TESTING

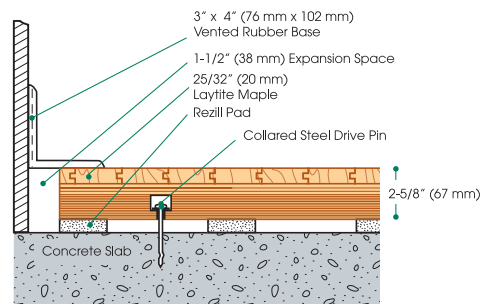


Laboratory test equipment calibrated and certified through the ISSS

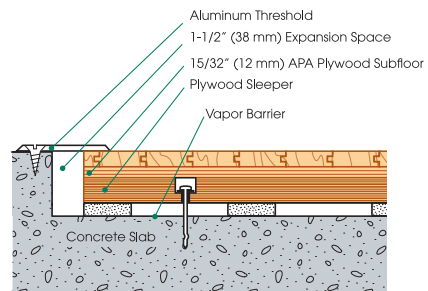
GREEN STATUS

Managed forests, certification available.

WALL BASE DETAIL



THRESHOLD DETAIL (optional accessory)



EQUIPMENT DETAIL (optional accessory)

