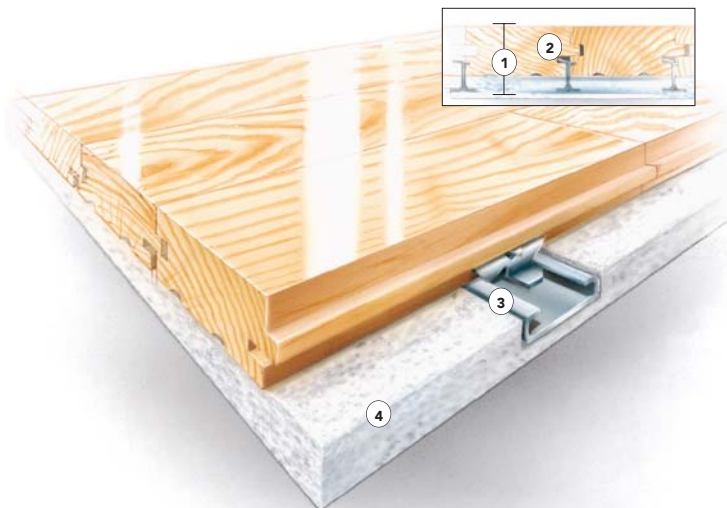


SYSTEM FEATURES AND BENEFITS

An anchored sports floor system providing great resistance to expansion and buckling. A fast and quiet floor, consisting in general of a vapor barrier, grooved underlayment, steel channels, clips, drivepins, maple flooring, sanding, sealers, finishes, game lines and wall base.

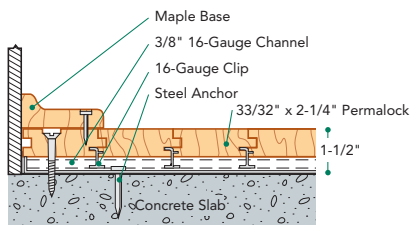


- ① Low profile
- ② Specially milled clip under tongue design
- ③ Heavy-duty, 16-gauge channel and clip
- ④ Multicellular closed cell polyethylene

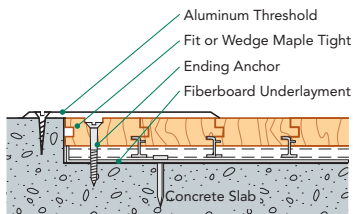
SPECIFICATIONS

MANUFACTURING	ISO9001:2000 CERTIFIED
SYSTEM TYPE	Fixed
SUBFLOOR CONSTRUCTION	Clip and Channel
RESILIENCE	Minimal
SLAB DEPRESSION	33/32" flooring – 1 1/2" 27/32" flooring – 1 1/4"
TESTING LABORATORY	United States Sports Surfacing Laboratory 
CERTIFIED TESTING	Laboratory test equipment calibrated and certified through the ISSS 
GREEN STATUS	Managed forests, certification available.

WALL BASE DETAIL



THRESHOLD DETAIL (optional accessory)



MULTISURFACE DETAIL (optional accessory)

