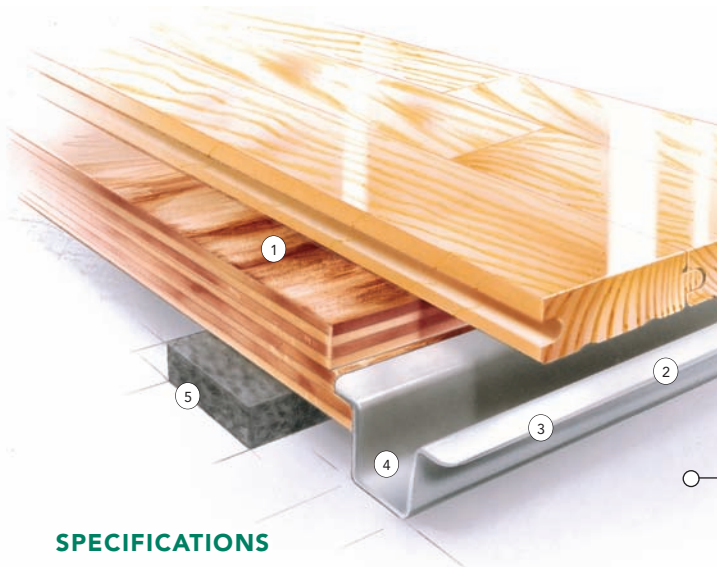


## SYSTEM FEATURES AND BENEFITS

A sports floor system providing the stability of an anchored floor with the uniform resiliency of a floating system, consisting in general of a vapor barrier, resilient pads, continuous steel channel, steel anchors, wood subflooring, maple flooring, sanding, sealers, finishes, game lines and wall base.



- ① Pre-assembled subfloor panels
- ② Continuous channel assures uniform substrate contact
- ③ Heavy-duty, buckle resistant steel channel provides greater resistance to pin pull through and upward pressure
- ④ Open channel for visual anchor inspection and additional anchor placement
- ⑤ Rezill Pad for excellent resilient life and loading

## SPECIFICATIONS

### MANUFACTURING

**ISO 9001:2000**  
CERTIFIED

### U.S. PATENT #

5,016,413

### SYSTEM TYPE

Fixed Resilient

### ANCHORAGE

Continuous Channel  
(Design Group 1)

### SUBFLOOR CONSTRUCTION

Plywood panel

### RESILIENCE

Rezill pads

### RECYCLED CONTRIBUTION



Rezill Channel subfloor system includes components with recycled content

### SLAB DEPRESSION

25/32" (20 mm) flooring – 2 1/8" (54 mm)  
33/32" (26 mm) flooring – 2 3/8" (60 mm)

### DIN STATUS



**D·I·N**  
Meets or exceeds all requirements of DIN 18032, Part 2

### TESTING LABORATORY



United States Sports Surfacing Laboratory

### CERTIFIED TESTING



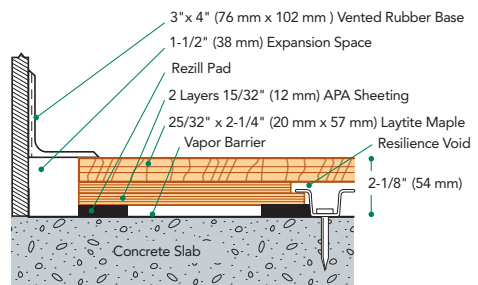
Laboratory test equipment calibrated and certified through the ISSS

### GREEN STATUS

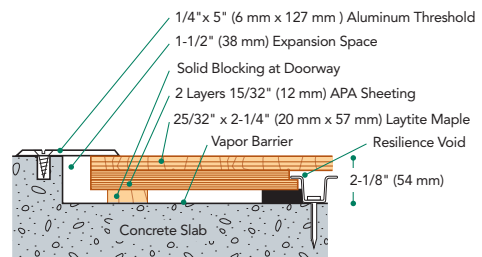


Managed forests, certification available

### WALL BASE DETAIL



### THRESHOLD DETAIL (optional accessory)



### EQUIPMENT DETAIL (optional accessory)

