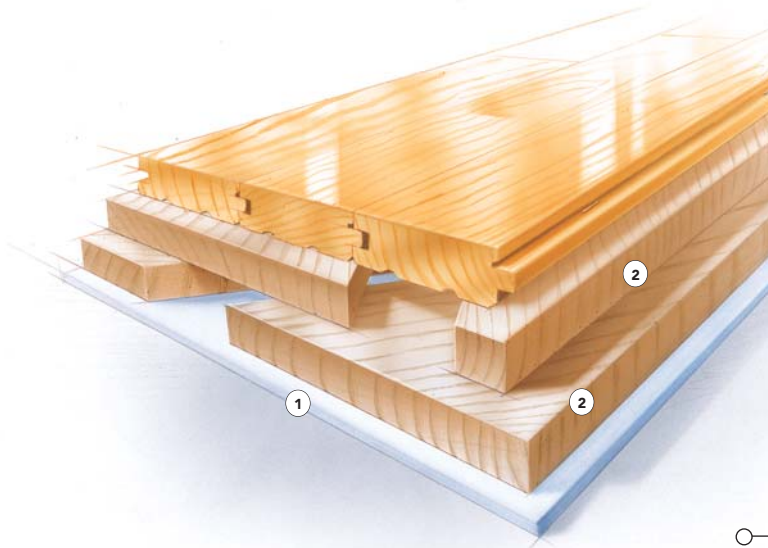


### F L O A T I N G   S Y S T E M

#### SYSTEM FEATURES AND BENEFITS

A floating sports floor system providing uniform play consisting in general of a vapor barrier, blanket foam underlayment, two layers nominal 1" x 6" softwood subfloor, maple flooring, sanding, sealers, finishes, game lines and wall base.

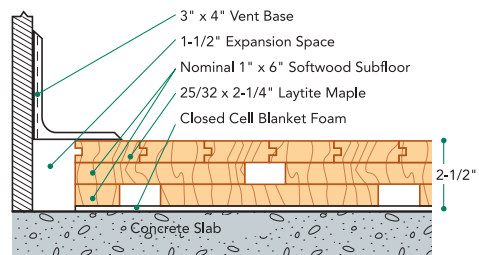


- ① Foam Blanket
- ② Nominal 1 x 6 softwood subfloor

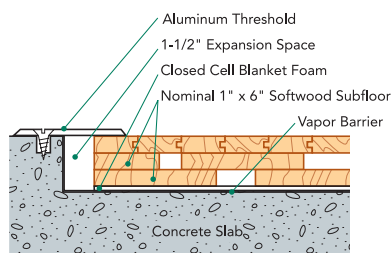
#### SPECIFICATIONS

<b>MANUFACTURING</b>	<b>ISO 9001:2000</b> CERTIFIED
<b>SYSTEM TYPE</b>	Floating System
<b>ANCHORAGE</b>	No concrete attachment
<b>SUBFLOOR CONSTRUCTION</b>	Softwood Sleepers
<b>RESILIENCE</b>	Closed Cell Blanket Foam
<b>SLAB DEPRESSION</b>	25/32" flooring - 2 1/2" 33/32" flooring - 2 3/4"  Adjust slab depression accordingly when replacing 1/4" foam with other thickness
<b>TESTING LABORATORY</b>	United States Sports Surfacing Laboratory
<b>CERTIFIED TESTING</b>	Laboratory test equipment calibrated and certified through the ISSS
<b>GREEN STATUS</b>	Managed forests, certification available.

#### WALL BASE DETAIL



#### THRESHOLD DETAIL (optional accessory)



#### EQUIPMENT DETAIL (optional accessory)

