



SMARTSTEP™

FIXED RESILIENT

**FIXED
RESILIENT**
○○○
SMARTSTEP

SYSTEM FEATURES AND BENEFITS

An anchored sports floor system providing high shock absorption and uniformity, consisting in general of a vapor barrier, pre-manufactured subfloor assemblies, anti-squeek collared steel anchors, resilient Rezill pads, maple flooring, sanding, sealers, finishes, game lines, and wall base.



- ① Pre-Manufactured Subfloor Assemblies
- ② Heavy Duty Concrete Anchors with Anti-Squeek Collar
- ③ Rezill Pad

SPECIFICATIONS

MANUFACTURING

ISO9001:2008
CERTIFIED

SYSTEM TYPE

Fixed Resilient

ANCHORAGE

Singular Pinned
(Design Group 3)

SUBFLOOR CONSTRUCTION

Sleeper Panel

RESILIENCE

Rezill Pads

RECYCLED CONTRIBUTION



SmartStep Subfloor System includes components with recycled content

SLAB DEPRESSION

25/32" (20 mm) flooring - 2 1/8" (54 mm)
33/32" (26 mm) flooring - 2 3/8" (60 mm)

DIN STATUS



D-I-N

Meets or exceeds all the requirements of DIN 18032, part 2, 2001

TESTING LABORATORY



United States Sports Surfacing Laboratory

CERTIFIED TESTING



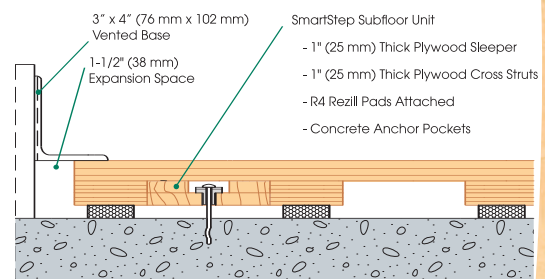
Laboratory test equipment calibrated and certified through the ISSS

GREEN STATUS

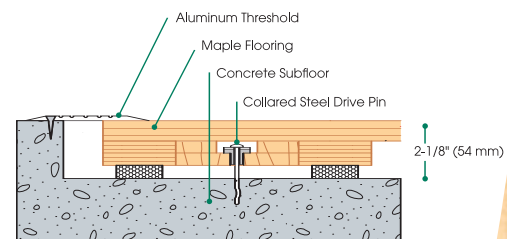


Managed forests, certification available

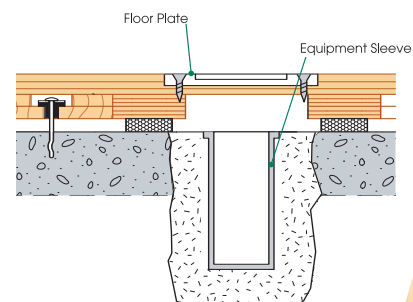
WALL BASE DETAIL



THRESHOLD DETAIL (optional accessory)



EQUIPMENT DETAIL (optional accessory)



connorfloor.com
1.800.283.9522