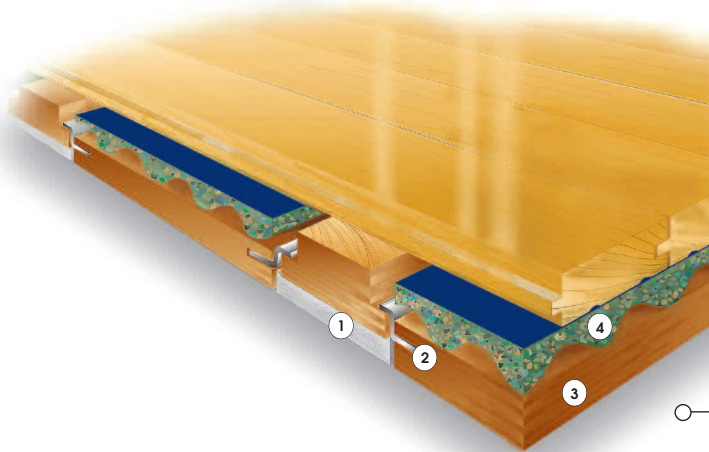


SYSTEM FEATURES AND BENEFITS

A sports floor system providing excellent uniformity, low vibration, great shock absorption and basketball rebound, consisting in general of a vapor barrier, subfloor sectional plates, cushion support plates, "Impact Control" cushions, wood nailers, nailer cushions, continuous steel channel, maple flooring, sanding, sealers, finish, game lines and wall base.



- ① Fastening Row Support Cushion
- ② Interlocking Heavy-Duty Steel Stability Channel
- ③ Anchored Cushion Support Plate
- ④ Impact Control Cushion made with recycled material

SPECIFICATIONS

MANUFACTURING

ISO9001:2000
CERTIFIED

U.S. PATENT

6,122,873

SYSTEM TYPE

Fixed Resilient

ANCHORAGE

Continuous Channel
(Design Group 1)

SUBFLOOR CONSTRUCTION

Engineered Panel

RESILIENCE

Blanket Pad

RECYCLED CONTRIBUTION



UniForce Subfloor System includes components with recycled content

SLAB DEPRESSION

25/32" (20 mm) flooring - 2" (51 mm)
33/32" (26 mm) flooring - 2 1/4" (57 mm)

DIN STATUS



D·I·N

Meets or exceeds all the requirements of DIN 18032, part 2, 2001

TESTING LABORATORY



United States Sports Surfacing Laboratory

CERTIFIED TESTING

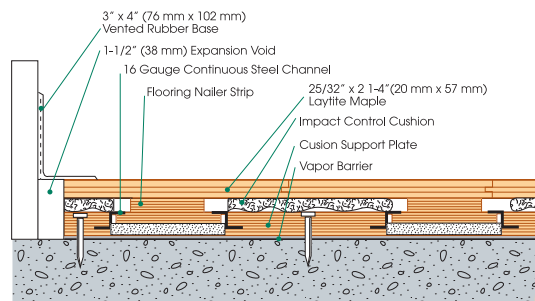


Laboratory test equipment calibrated and certified through the ISSS

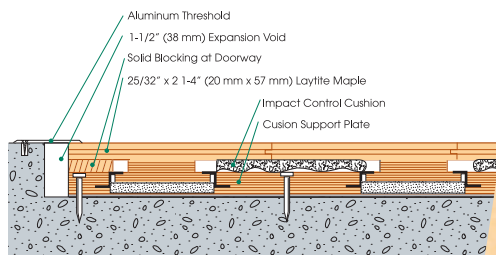
GREEN STATUS

Managed forests, certification available

WALL BASE DETAIL



THRESHOLD DETAIL (optional accessory)



EQUIPMENT DETAIL (optional accessory)

